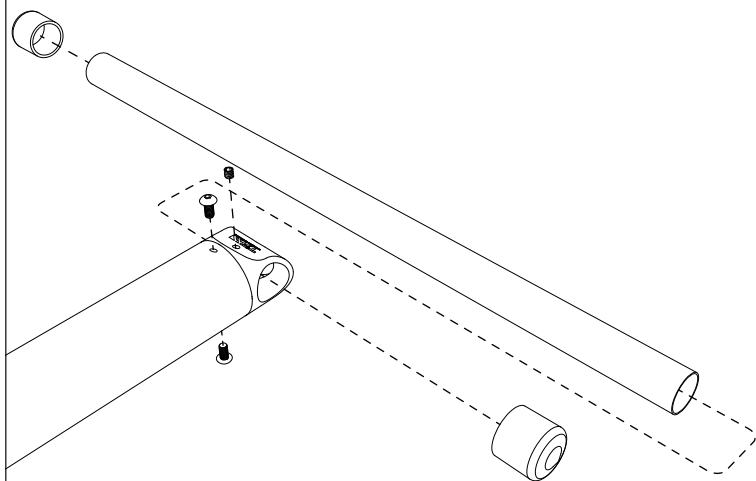
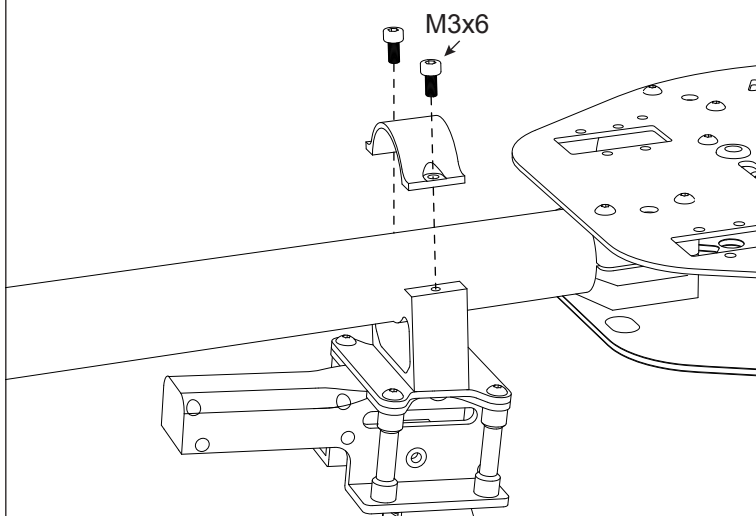


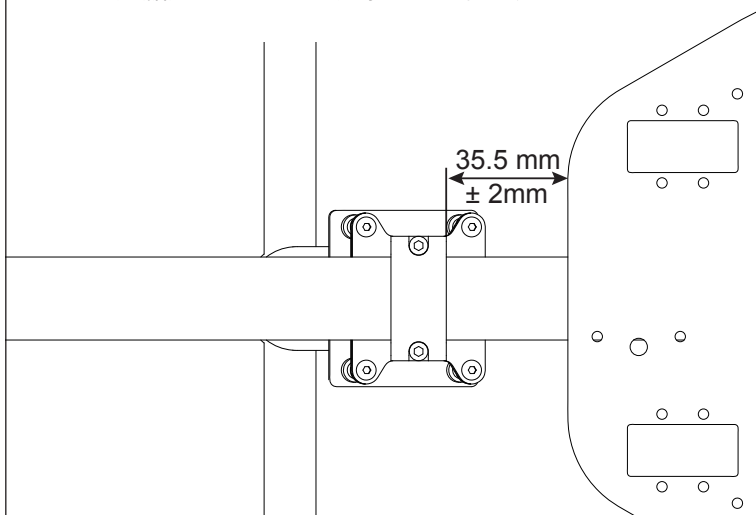
- 1** Assemble Landing gear T shaped part as below pictured.  
將腳架T管如下圖組裝。



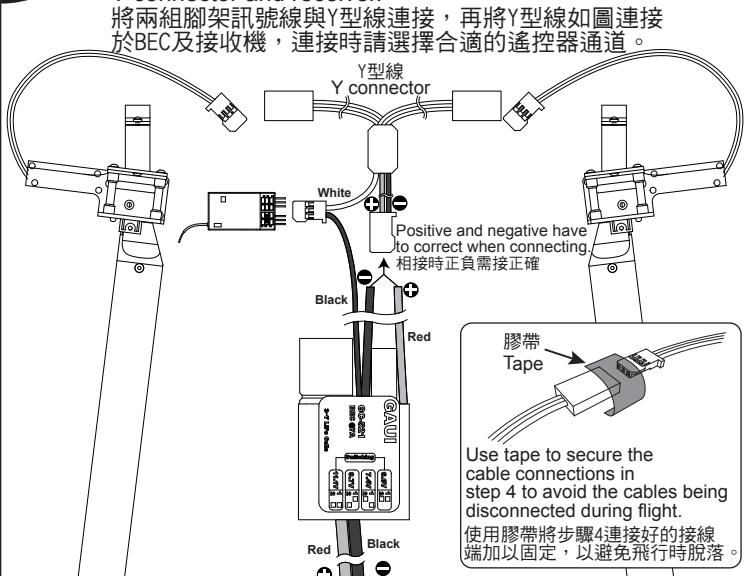
- 2** Install and secure the landing gear boom clamps to the boom, attention to the recommended distance as in step 3.  
將腳架固定座結合於軸管上，注意間距如步驟3。



- 3** Confirm the distance and adjust clamp fixture distance(reference step 5) so when the landing gears are retracted it does not touch the motor mount.  
確認間距並配合步驟5調整收腳時不干涉馬達艙座。間距越大縫隙越大，相反則越小。

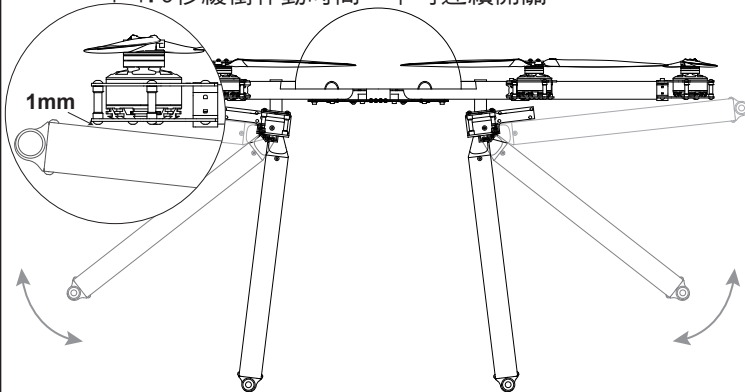


- 4** Connect two landing gear wires with Y connector, then connect Y connector to BEC and receiver as picture shows. Please choose proper channel when connect the Y connector and receiver.  
將兩組腳架訊號線與Y型線連接，再將Y型線如圖連接於BEC及接收機，連接時請選擇合適的遙控器通道。



- 5** After assembly is completed, lift the multi-rotor frame off the ground and test the working of the folding landing gear operations. Make sure when retracted there is at least a 1mm gap between motor mount & landing gear.  
Attention: There is about 1~1.5 second of delay between on/off switch, do not repeat on/off switch operation within short period of time.

安裝完成後請將機體抬離地面並測試收腳。確認收腳後與馬達艙底端留有1mm縫隙。注意：每次扳動開關後會有1~1.5秒緩衝作動時間，不可連續開關。



- 6** Assembly explosion view.  
爆炸圖。

Make sure the post embedded in the recess.  
請確實將圓柱嵌入凹槽內。

